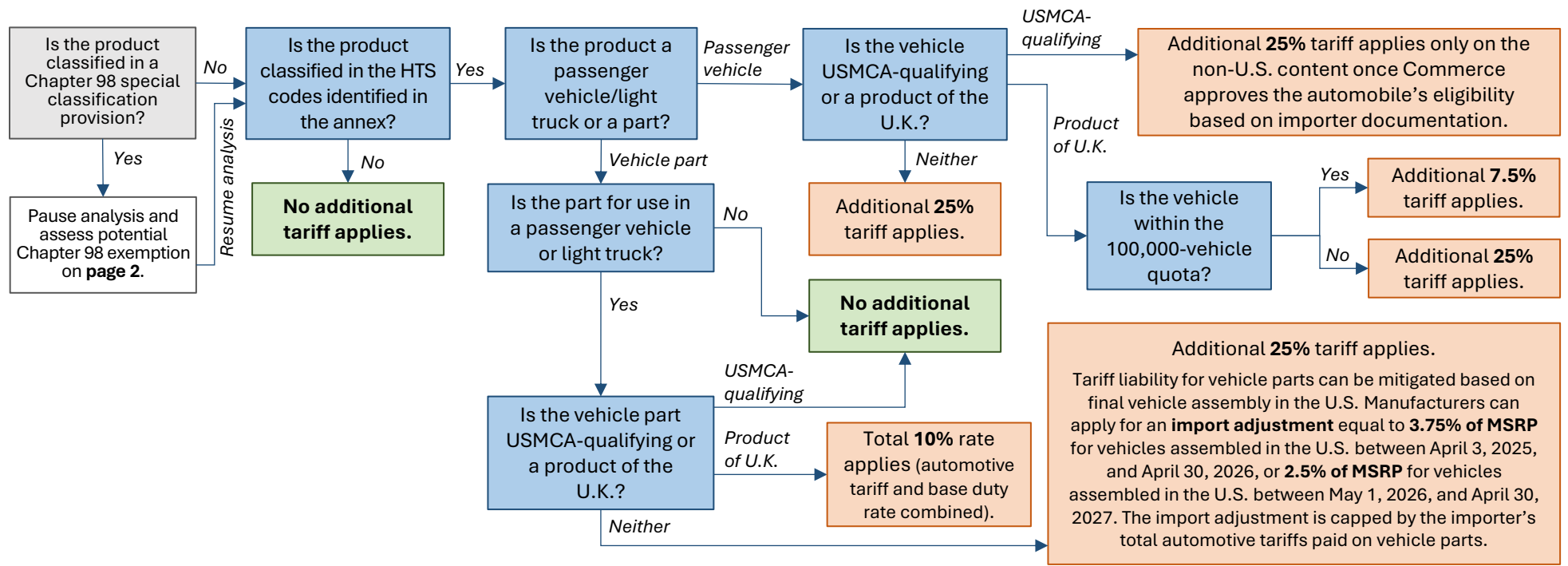
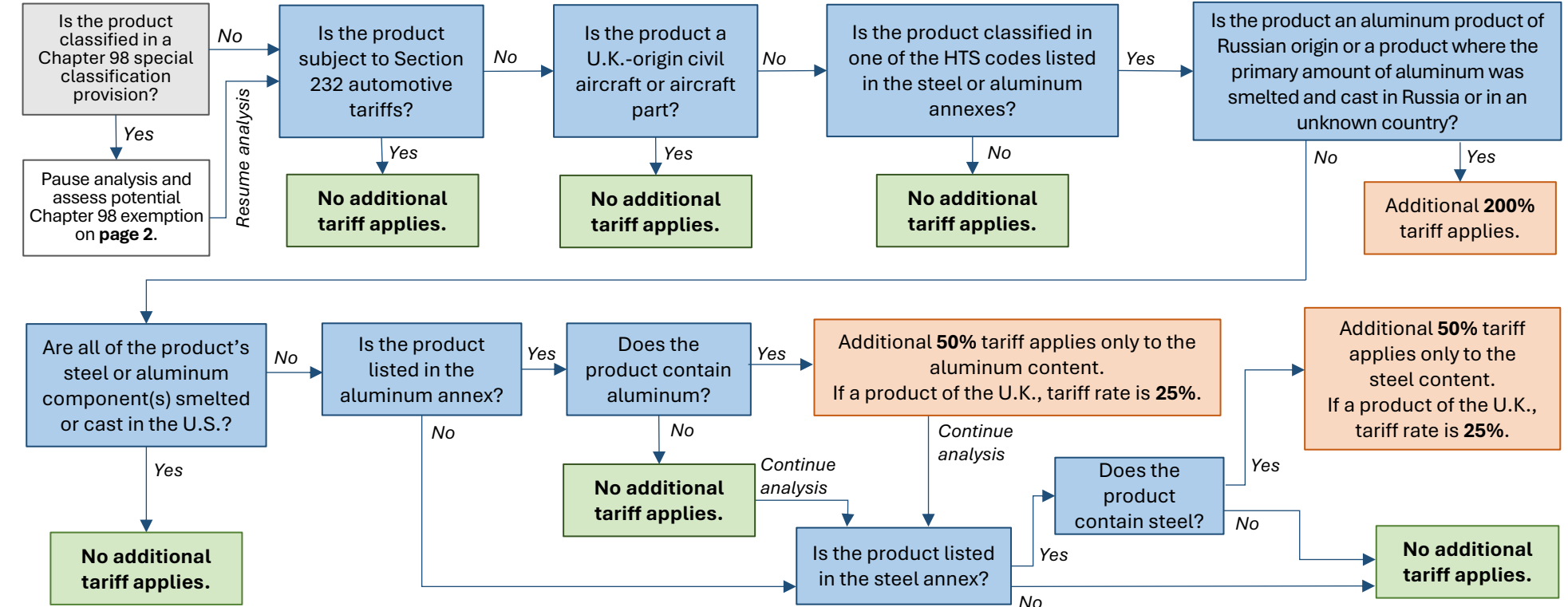


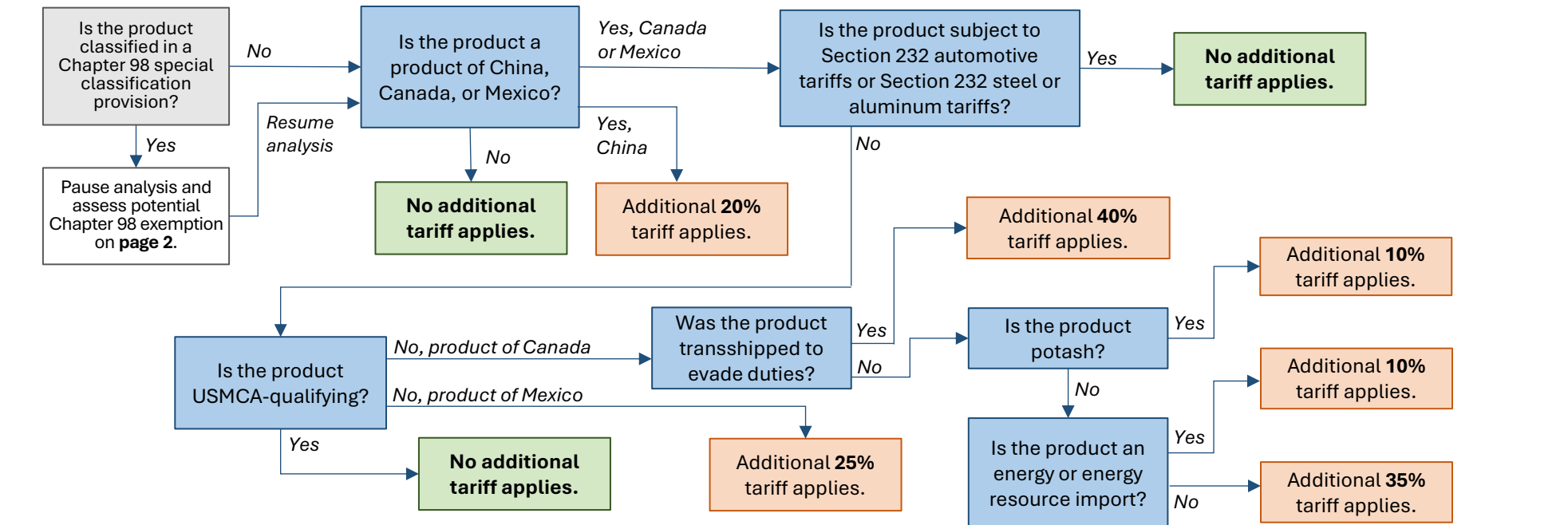
SECTION 232 TARIFFS
(Automotive)



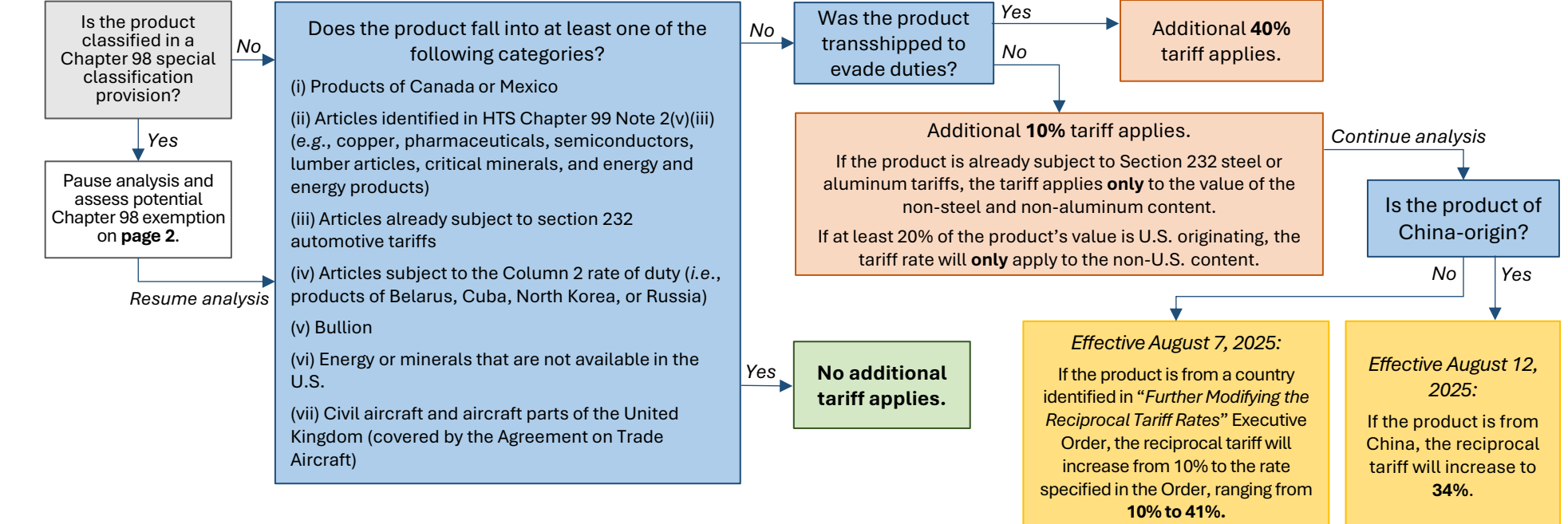
SECTION 232 TARIFFS
(Steel & Aluminum)



IEEPA TARIFFS
(Drug & Immigration)



IEEPA TARIFFS
(Reciprocal Trade)



Key

No additional tariff applies.

Tariff applies.

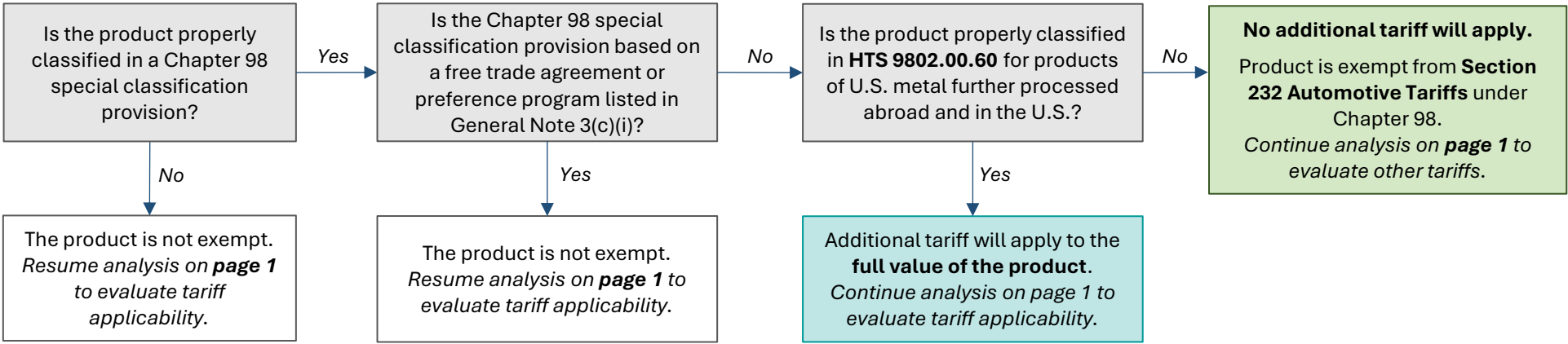
Future tariff.

Learn more about Miller & Chevalier's Customs & Import Trade Practice

The information contained in this communication is not intended as legal advice or as an opinion on specific facts.

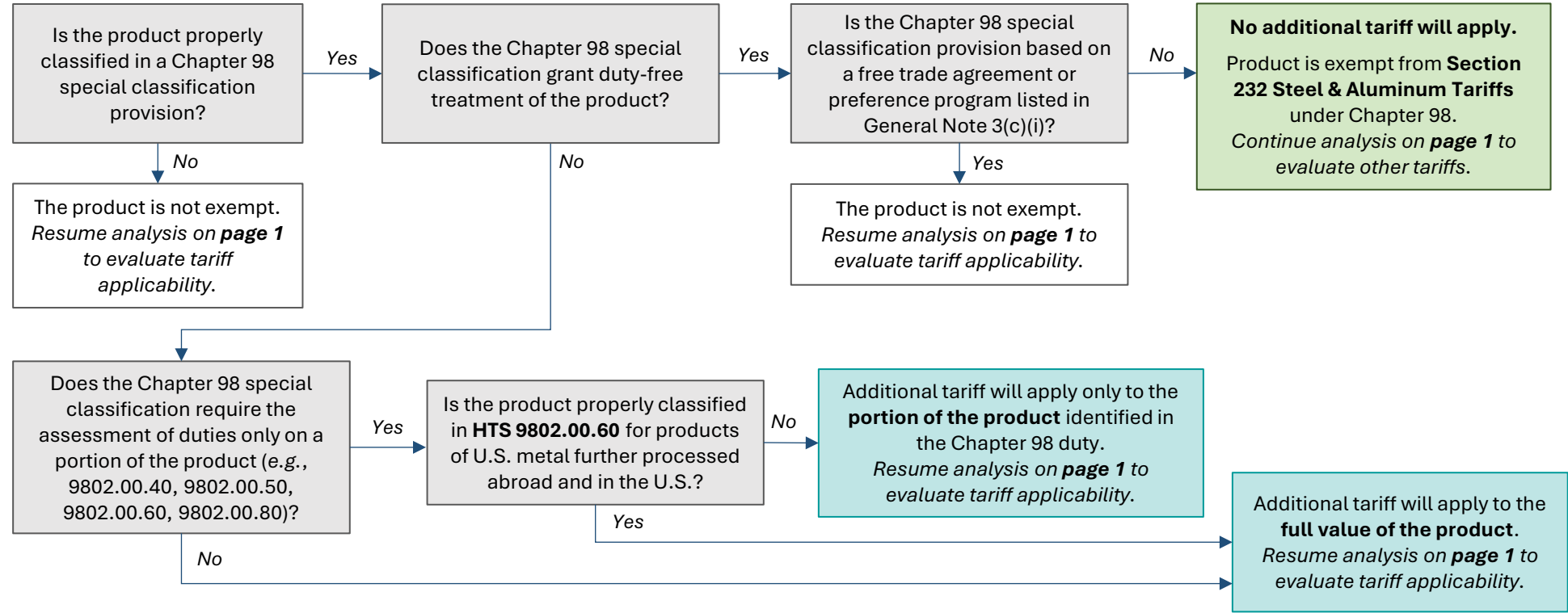
SECTION 232 TARIFFS

(Automotive)



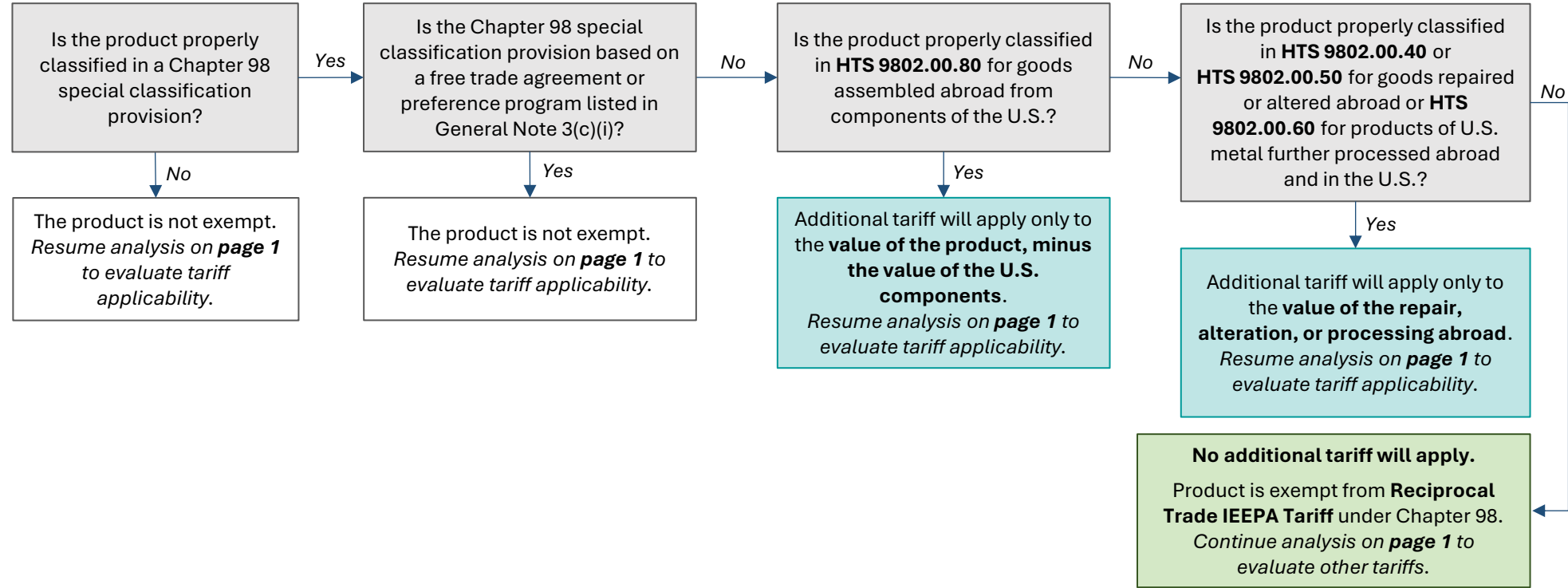
SECTION 232 TARIFFS

(Steel & Aluminum)



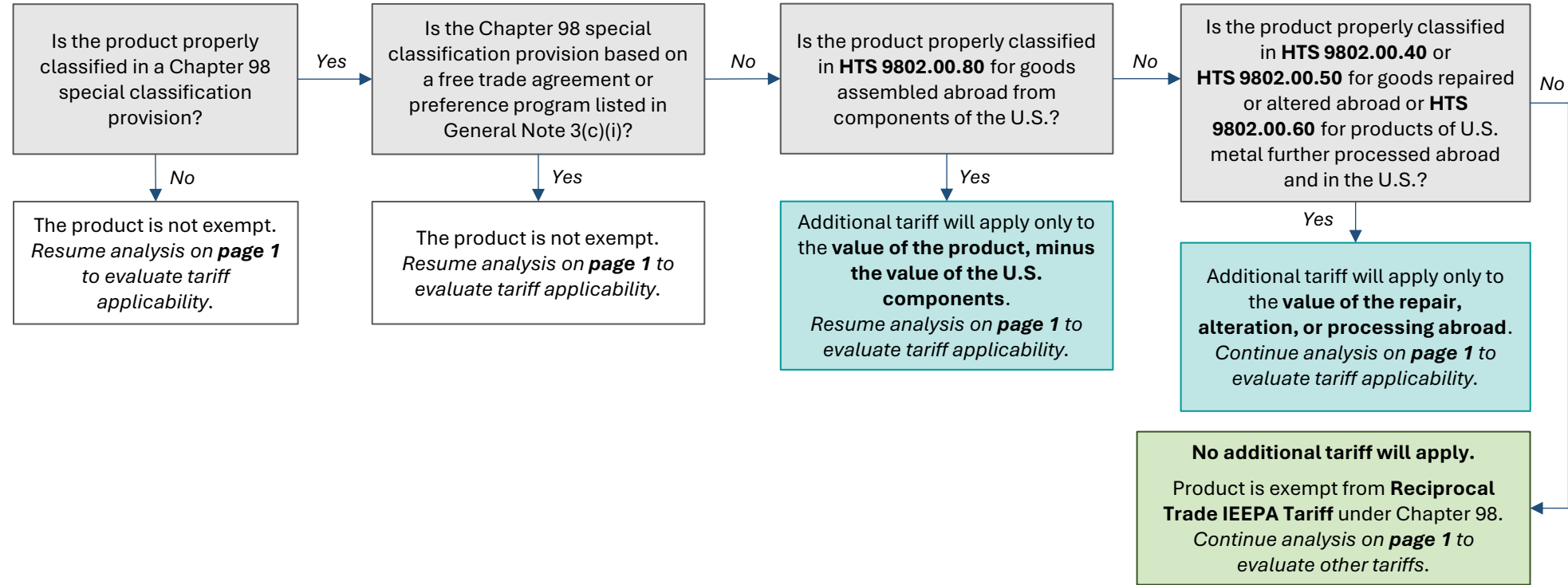
IEEPA TARIFFS

(Drug & Immigration)



IEEPA TARIFFS

(Reciprocal Trade)



Key

- Exempt under Chapter 98.
- Partial Chapter 98 exemption.
- No Chapter 98 exemption.

Learn more about Miller & Chevalier’s Customs & Import Trade Practice

The information contained in this communication is not intended as legal advice or as an opinion on specific facts.